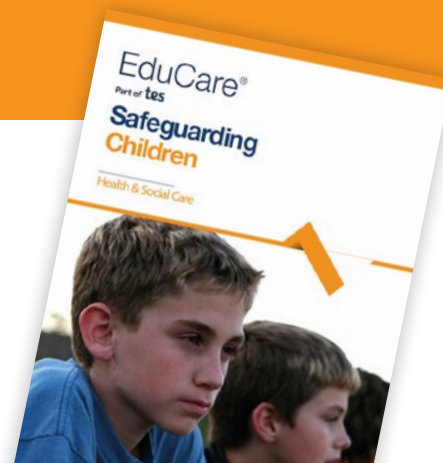


Safeguarding Children in Health and Social Care

Safeguarding is everyone's responsibility, so all staff working in a health or social care setting need to ensure that children are protected from harm. This programme will help give participants confidence that they understand the different forms of abuse, are able to recognise them and take action should there be concerns about a child or young person's wellbeing.



Course details

- Five modules with five multiple-choice questionnaires
- Five CPD credits*
- Optional narration of the course modules and questionnaires for accessibility
- Personalised downloadable certificate
- 70% pass mark
- Printable modules for future reference

*1 CPD credit equals up to 1 hour of learning

Course content

Course overview

Once you have completed this course you will be able to:

- describe the main forms of abuse
- recognise signs that might indicate an abuse concern
- understand the importance of children's rights
- state how to take action if you know or suspect that a child or young person needs help, or they disclose this to you
- discuss the legislation and guidance involved with safeguarding children.



Module 1 Child Development

- Basic developmental needs of the child.
- The stages of child development.
- Negative influences on development.

Module 2 Children's Rights and Forms of Child Abuse

- Children's rights.
- The different forms of child abuse.
- The effects of child abuse.

Module 3 Recognising Abuse

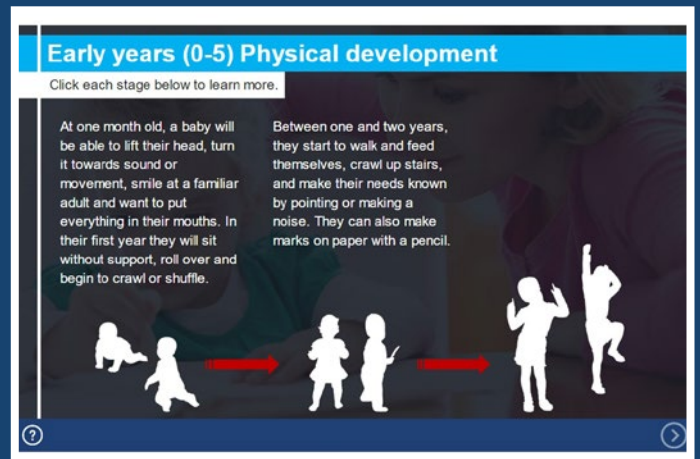
- The signs and indicators of different forms of child abuse.
- Scenarios for reflective thought.

Module 4 Reporting Abuse and the Child Protection System

- Safeguarding responsibilities.
- How to respond if someone confides abuse.
- What to do if there are concerns of abuse.
- How to report abuse and share information.
- What typically happens after concerns have been reported.

Module 5 Safeguarding Legislation and Good Practice

- What legislation and guidance exists to help protect the welfare of children and young people.
- What organisations can do to foster and promote a culture of safety.



This course is suitable for

Anyone in a health or social care setting whose work requires them to come into contact with children and young people.

Key features

- Visually engaging and interactive.
- Answer explanations for those who achieve the pass mark.
- Additional resources to expand learning including scenarios and links to organisations for information and guidance on safeguarding.

Purchase options

1. Available as a standalone course on the EduCare website.
2. Buy as one of our EduCare multi-course licences. For further information, please call 01926 436212 to discuss purchase options and licences.

Female Genital Mutilation

Behavioural signs of FGM include:
Click the buttons below to learn more.

- not turning up for health appointments
- extended absence from school
- absence from lessons, possibly spending long periods in the toilets
- avoiding sports
- anxiety leading up to holidays (especially summer holidays as this is a time when families may take their child abroad for the procedure)

Starting difficult conversations

If your concern is about a young person, for example, aged 12 or over, you could try to initiate a conversation, to let the young person know that you are there if they need someone to talk to. You may find the following phrases helpful to start a conversation.
Move the slider to each point below.

"I'm concerned about you. Is everything okay?"

"May I have a word with you? You seem to be..."

Legislation

There are several pieces of legislation that are relevant to the protection of children. Click the icons below to learn more.

Children and Social Work Act 2017

This Act improves support for looked after children and care leavers, promotes the welfare and safeguarding of children, and makes provision about the regulation of social workers.



Why choose us?

“ I like the modular delivery of the courses and the fact that I can access management reports so that I know which people have undertaken the learning and exactly how they got on with it. It can also highlight any gaps in people’s knowledge that we can remedy if necessary. ”

Noeleen Brown, Nurse Teacher
Portland Hospital for Women and Children

www.educare.co.uk
 01926 436 211
 online@educare.co.uk

CPD
CERTIFIED
The CPD Certification Service

